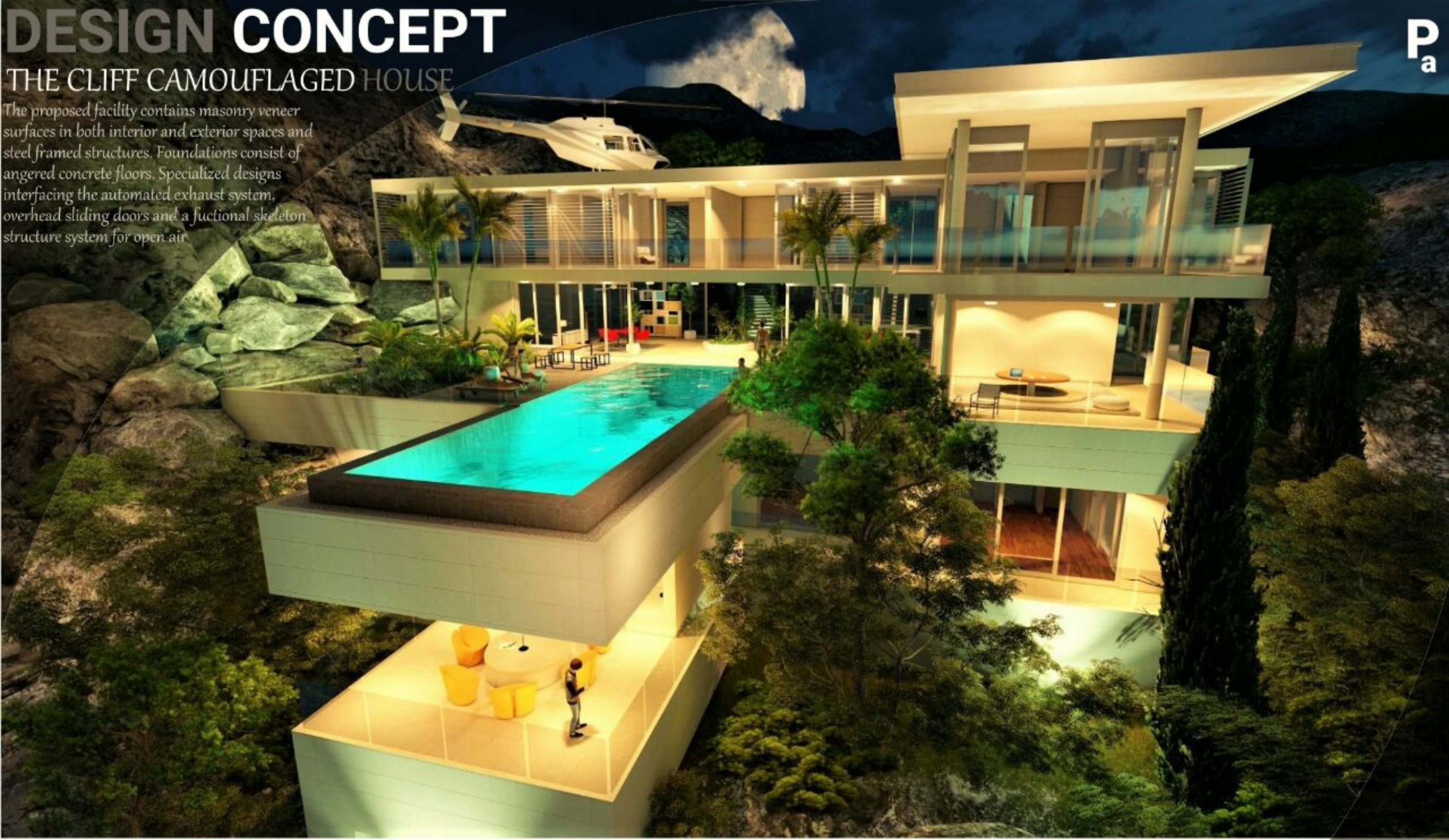


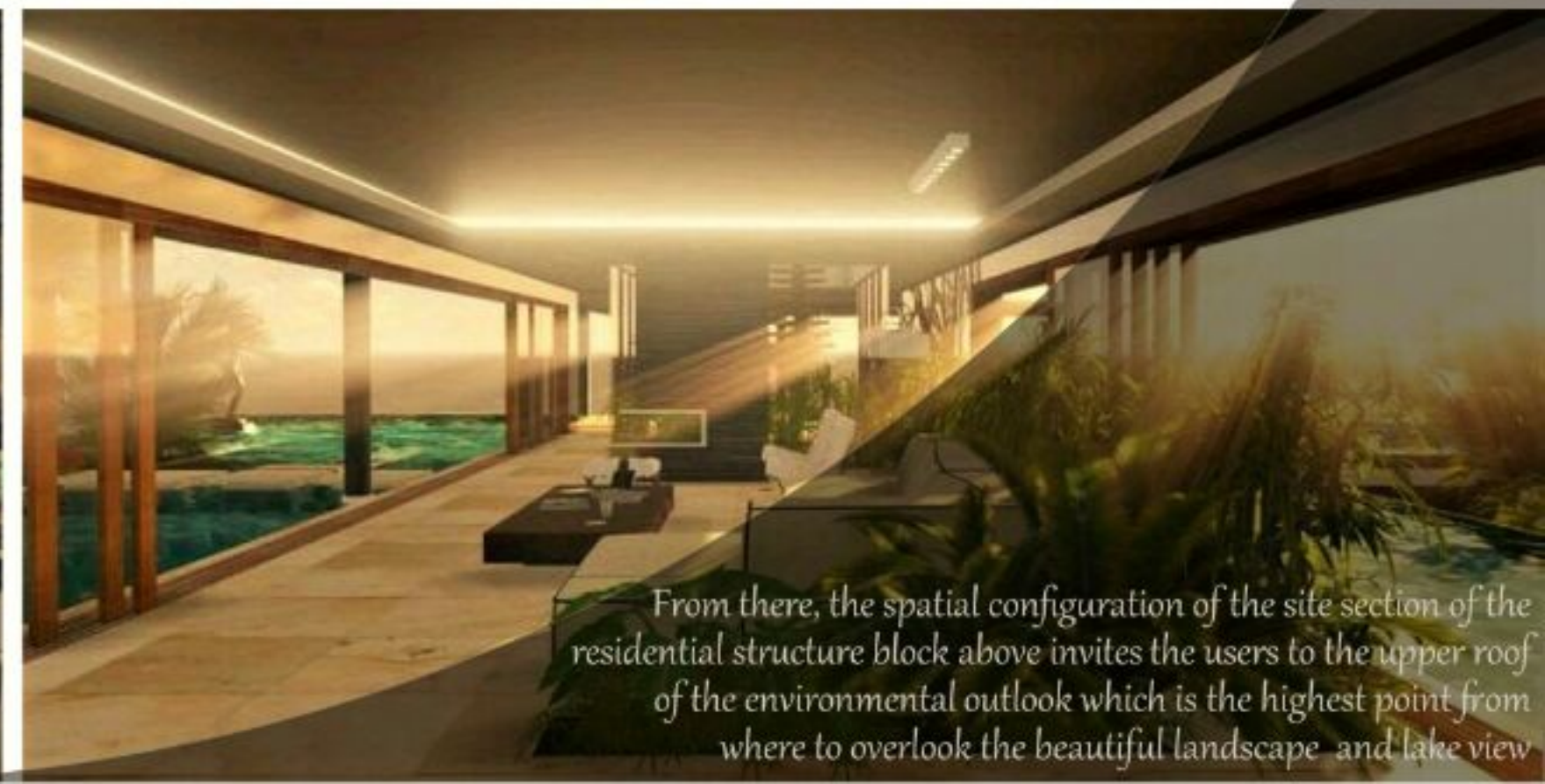
# DESIGN CONCEPT

## THE CLIFF CAMOUFLAGED HOUSE

The proposed facility contains masonry veneer surfaces in both interior and exterior spaces and steel framed structures. Foundations consist of angled concrete floors. Specialized designs interfacing the automated exhaust system, overhead sliding doors and a functional skeleton structure system for open air



At some angles of view, one can see the soft blues in glass overhead. In the early morning and viewed from the west, some surfaces reflect back the warm yellow morning light. During evening the same effect can be seen from the east, with more orange and reddish tones of sunset softly appearing on the surfaces.



From there, the spatial configuration of the site section of the residential structure block above invites the users to the upper roof of the environmental outlook which is the highest point from where to overlook the beautiful landscape and lake view

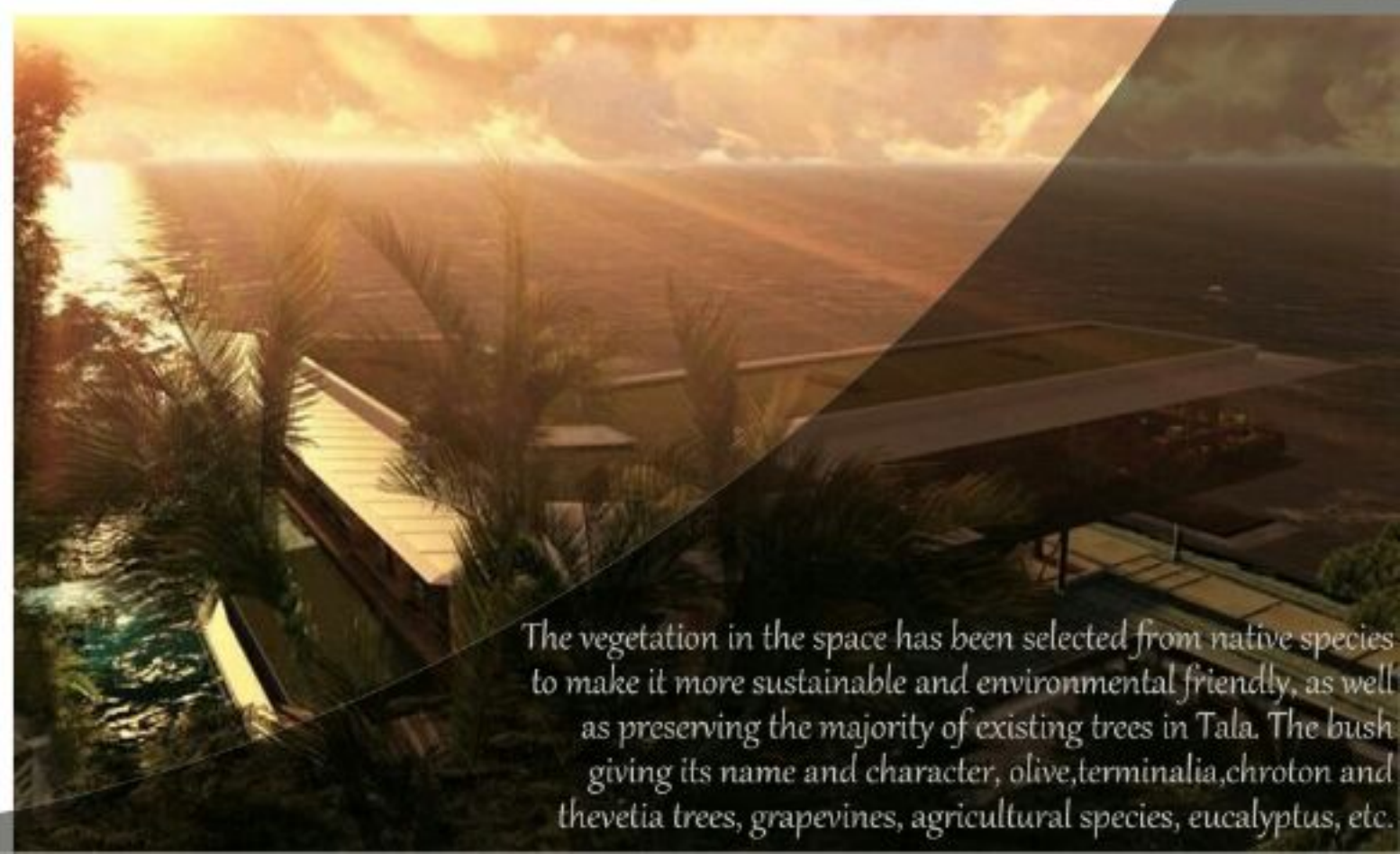
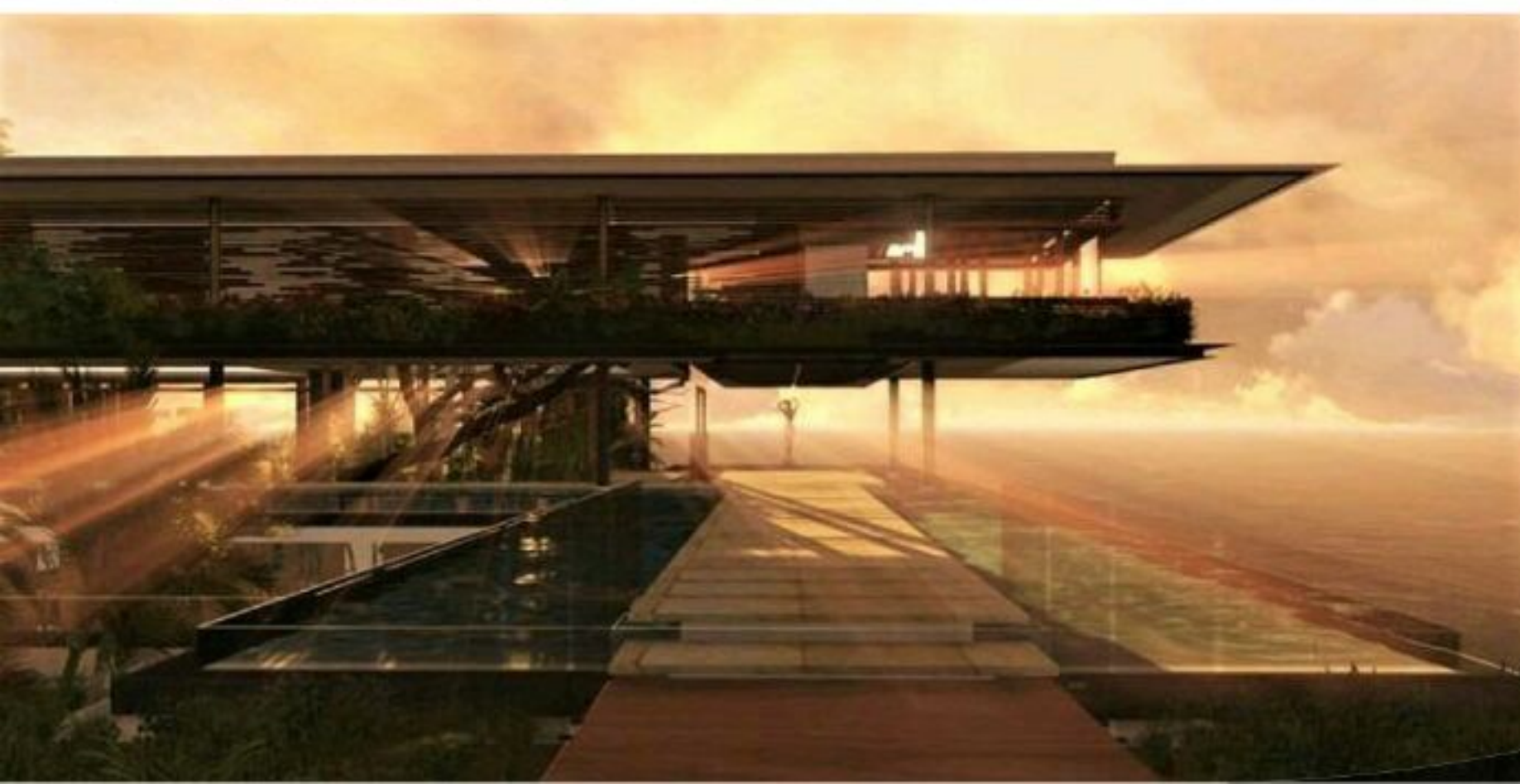


# DESIGN CONCEPT

## THE CLIFF CAMOUFLAGED HOUSE

The landscape and the structure are a four sided form that lay different roles in the long daylight hours of the season. During daylight hours, these conditions add visual interest of the facades by reflecting the light and colors that vary throughout the day or from season to season

Our outdoor spaces need to be designed to provide value in many ways, such as rewarding the new and existing senses, promoting environmental quality and sustainable spaces for decades to come and most importantly promoting healthy communities with a sense of pride and engagement (sustainable landscapes).



The vegetation in the space has been selected from native species to make it more sustainable and environmental friendly, as well as preserving the majority of existing trees in Tala. The bush giving its name and character, olive, terminalia, chroton and thevetia trees, grapevines, agricultural species, eucalyptus, etc.



# DESIGN CONCEPT

## THE CLIFF CAMOUFLAGED HOUSE

Our outdoor spaces need to be designed to provide value in many ways, such as rewarding the new and existing senses, promoting environmental quality and sustainable spaces for decades to come and most importantly promoting healthy communities with a sense of pride and engagement (sustainable landscapes).



The collected water is used to refill the pool and for domestic purposes. Also used by fountains and supplied to local areas in need

This sustainable process ensures dependency on fossil fuels and other pollutant forms of energy are reduced, power supply diversified, new jobs and industries created, reduced air pollution and cut global warming emissions around the surrounding spaces.



The sub level (roof) mitigates the effects of storm water by retaining a portion of the rainfall it captures. It slows down the flow of water that comes from the roof. These effects minimize the amount of water rushing from the top into storm sewers and the lake and collects it for reuse.